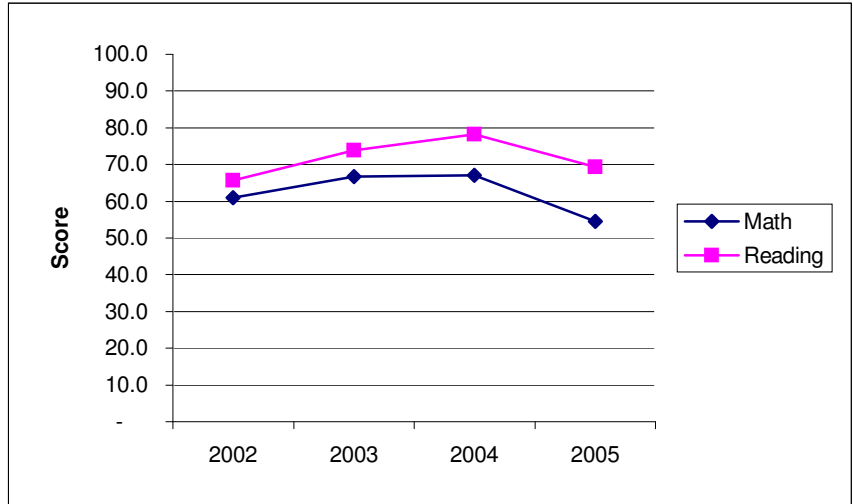


# Central York PSSA Pass Rates

## Grade 11

	Math	Reading
2002	60.9	65.6
2003	66.8	73.9
2004	67.0	78.2
2005	54.6	69.3

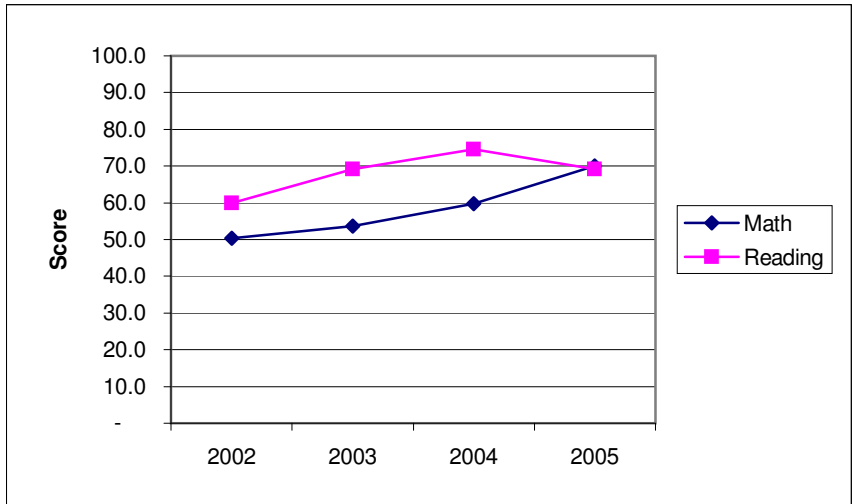
<b>Class of 2006</b>	4.2	9.3
----------------------	-----	-----



## Grade 8

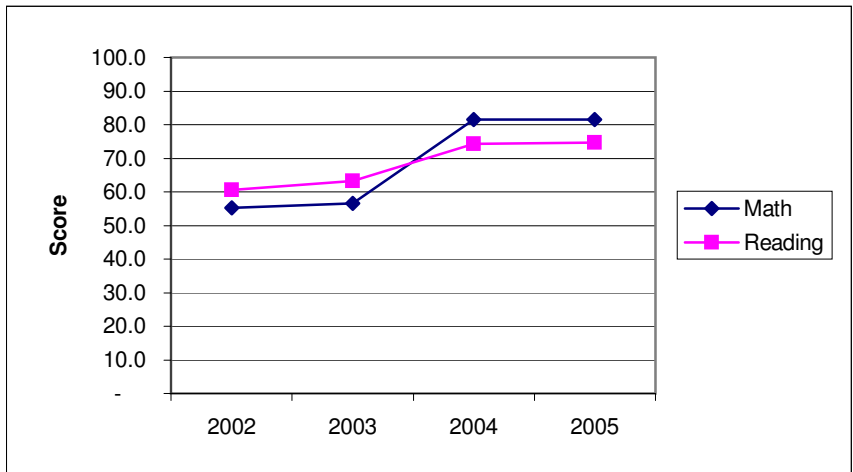
	Math	Reading
2002	50.4	60.0
2003	53.6	69.2
2004	59.7	74.6
2005	70.1	69.2

<b>Class of 2009</b>	14.90	8.70
----------------------	-------	------



## Grade 5

	Math	Reading
2002	55.2	60.5
2003	56.5	63.2
2004	81.6	74.2
2005	81.5	74.6

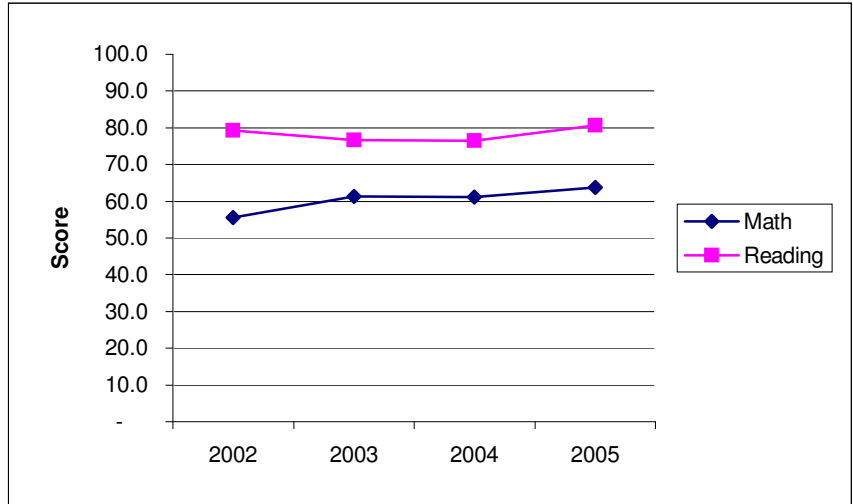


# Dallastown Area PSSA Pass Rates

## Grade 11

	Math	Reading
2002	55.5	79.3
2003	61.4	76.7
2004	61.2	76.4
2005	63.8	80.6

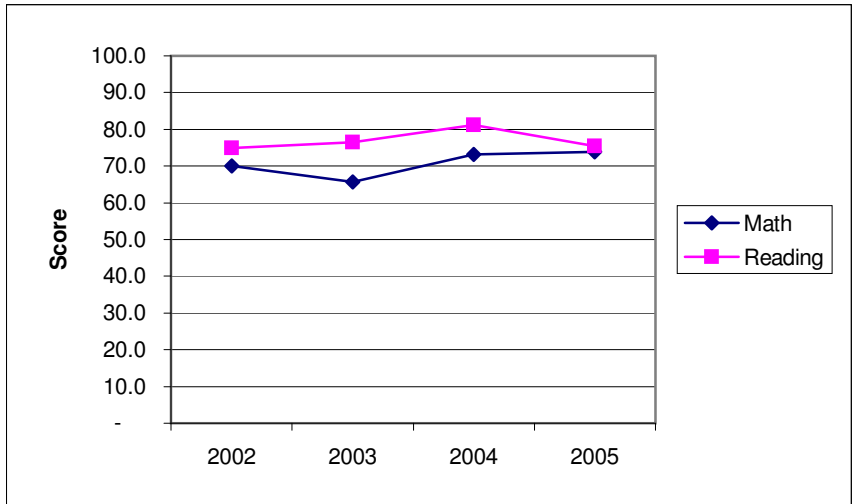
<b>Class of 2006</b>	(6.3)	5.6
----------------------	-------	-----



## Grade 8

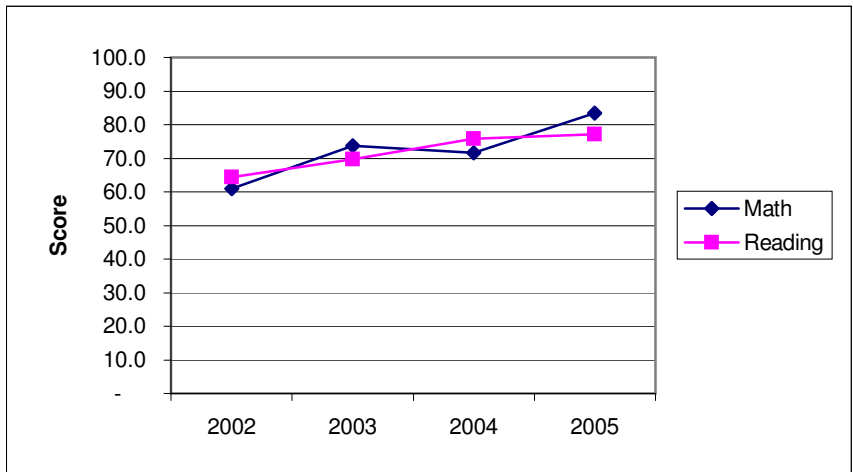
	Math	Reading
2002	70.1	75.0
2003	65.7	76.4
2004	73.2	81.2
2005	73.9	75.5

<b>Class of 2009</b>	13.00	11.10
----------------------	-------	-------



## Grade 5

	Math	Reading
2002	60.9	64.4
2003	73.8	69.7
2004	71.6	75.8
2005	83.4	77.2

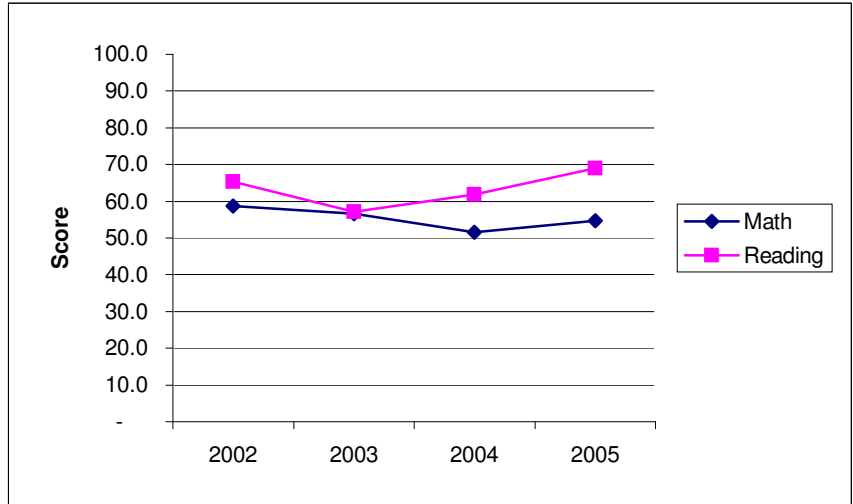


# Dover Area PSSA Pass Rates

## Grade 11

	Math	Reading
2002	58.7	65.3
2003	56.6	57.1
2004	51.6	61.9
2005	54.7	69.0

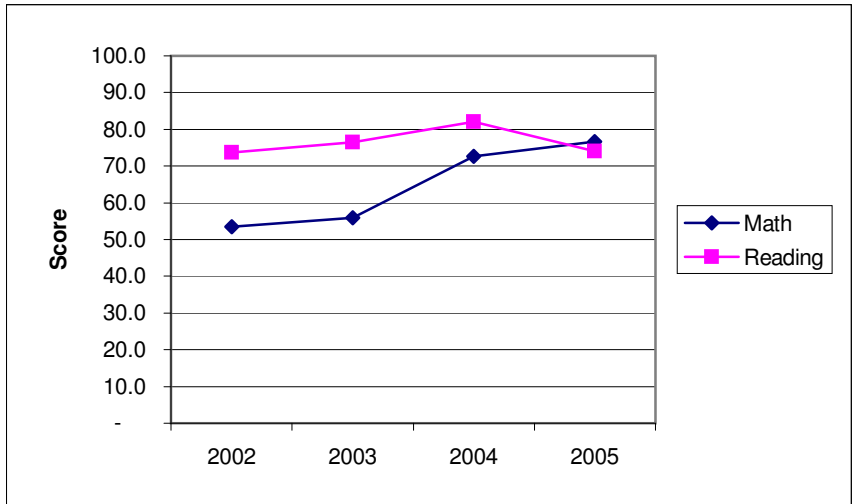
<b>Class of 2006</b>	1.2	(4.7)
----------------------	-----	-------



## Grade 8

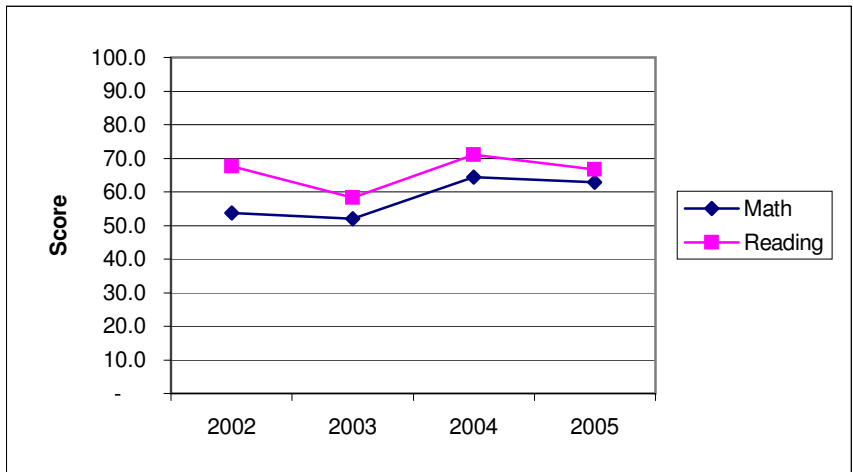
	Math	Reading
2002	53.5	73.7
2003	55.9	76.5
2004	72.6	82.0
2005	76.6	74.1

<b>Class of 2009</b>	22.80	6.40
----------------------	-------	------



## Grade 5

	Math	Reading
2002	53.8	67.7
2003	52.0	58.2
2004	64.3	71.0
2005	62.8	66.7

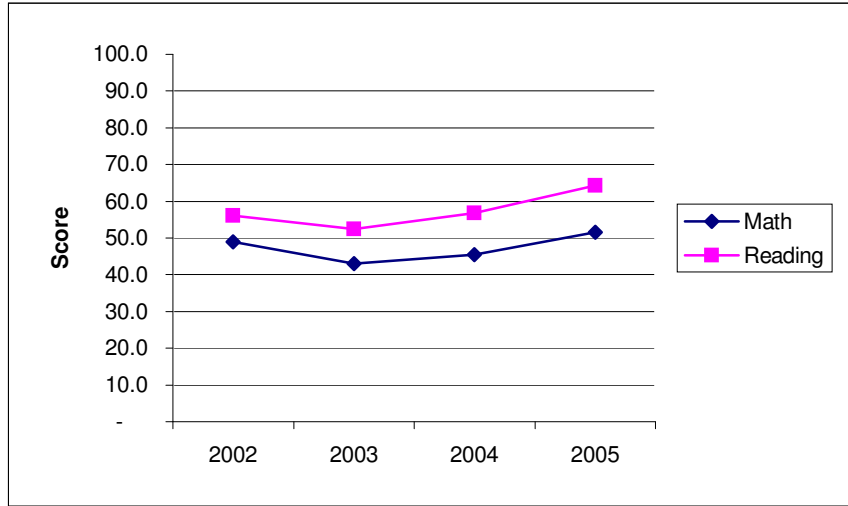


# Eastern York PSSA Pass Rates

## Grade 11

	Math	Reading
2002	49.0	56.1
2003	43.1	52.5
2004	45.5	56.8
2005	51.5	64.2

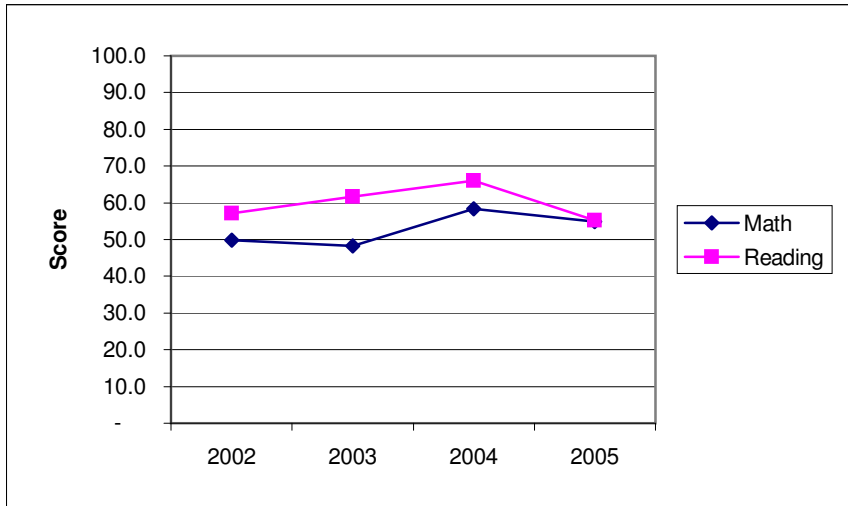
<b>Class of 2006</b>	1.7	7.1
----------------------	-----	-----



## Grade 8

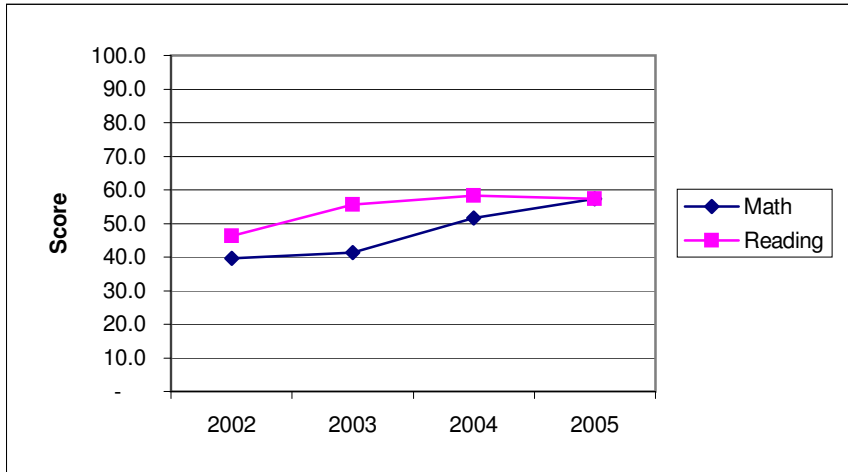
	Math	Reading
2002	49.8	57.1
2003	48.2	61.6
2004	58.4	66.0
2005	54.8	55.2

<b>Class of 2009</b>	15.10	8.90
----------------------	-------	------



## Grade 5

	Math	Reading
2002	39.7	46.3
2003	41.4	55.7
2004	51.7	58.2
2005	57.4	57.3

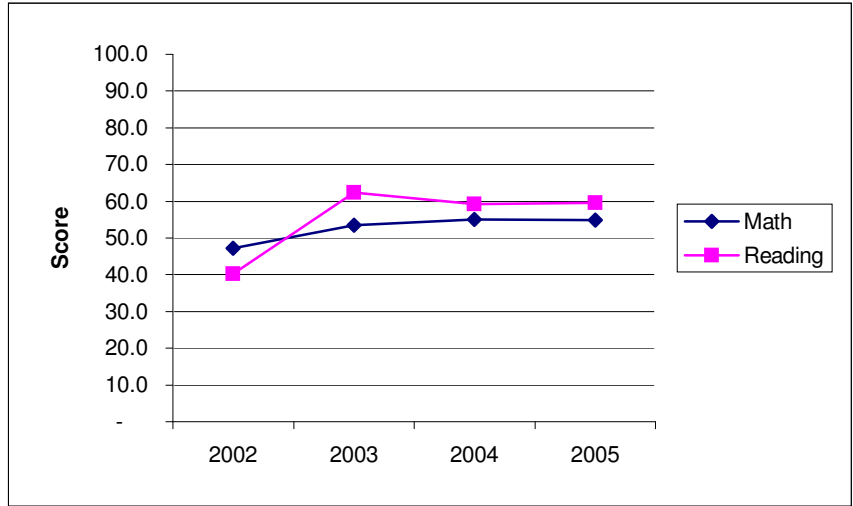


# Hanover Public PSSA Pass Rates

## Grade 11

	Math	Reading
2002	47.2	40.3
2003	53.5	62.3
2004	55.1	59.2
2005	54.9	59.5

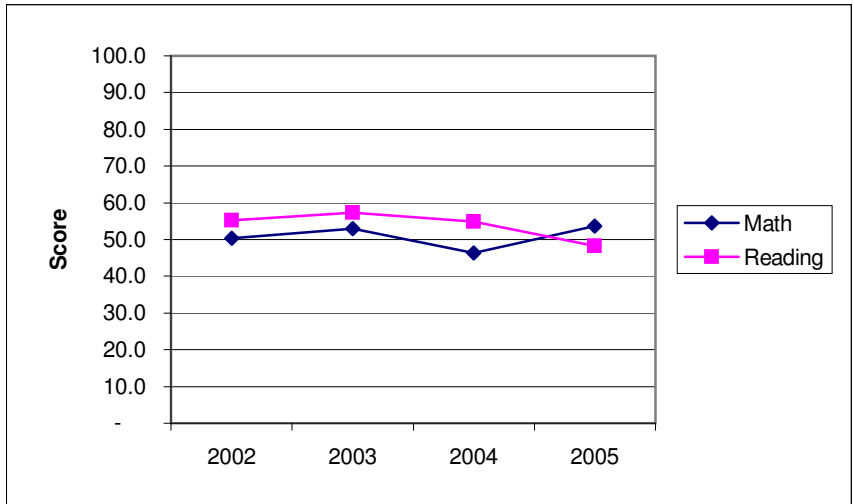
<b>Class of 2006</b>	4.5	4.2
----------------------	-----	-----



## Grade 8

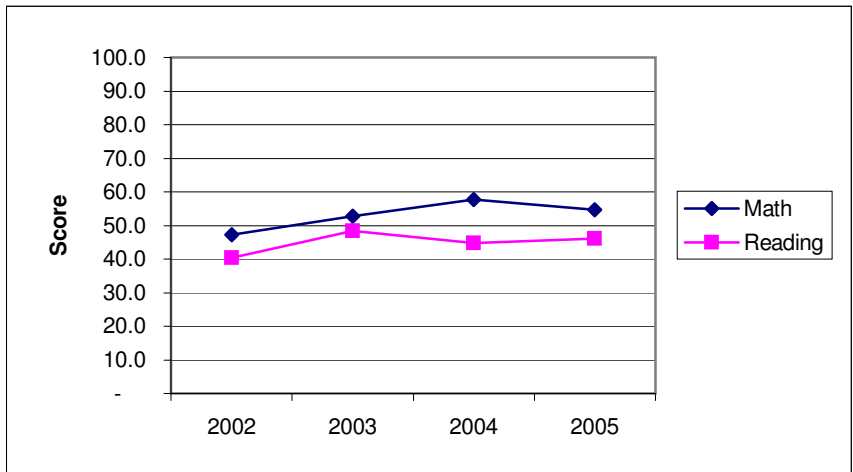
	Math	Reading
2002	50.4	55.3
2003	53.0	57.3
2004	46.3	54.8
2005	53.6	48.2

<b>Class of 2009</b>	6.40	7.90
----------------------	------	------



## Grade 5

	Math	Reading
2002	47.2	40.3
2003	52.8	48.3
2004	57.7	44.8
2005	54.7	46.1

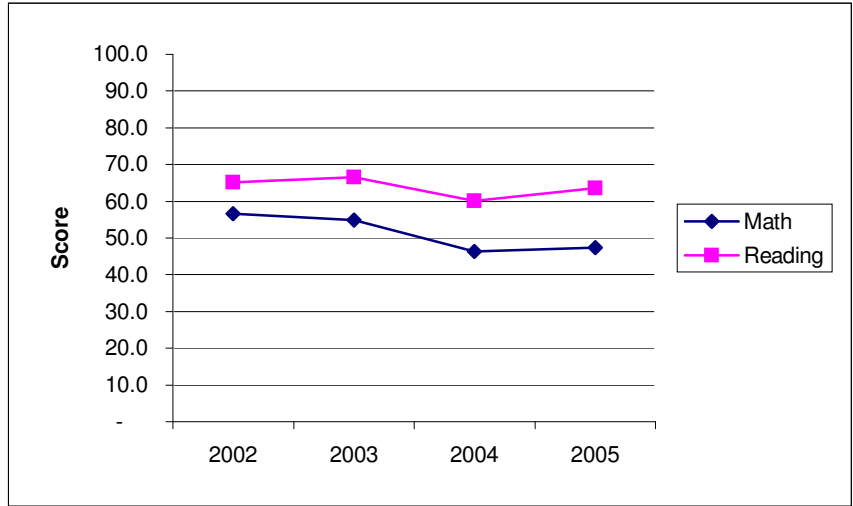


# Northeastern York PSSA Pass Rates

## Grade 11

	Math	Reading
2002	56.7	65.2
2003	54.8	66.5
2004	46.4	60.1
2005	47.4	63.6

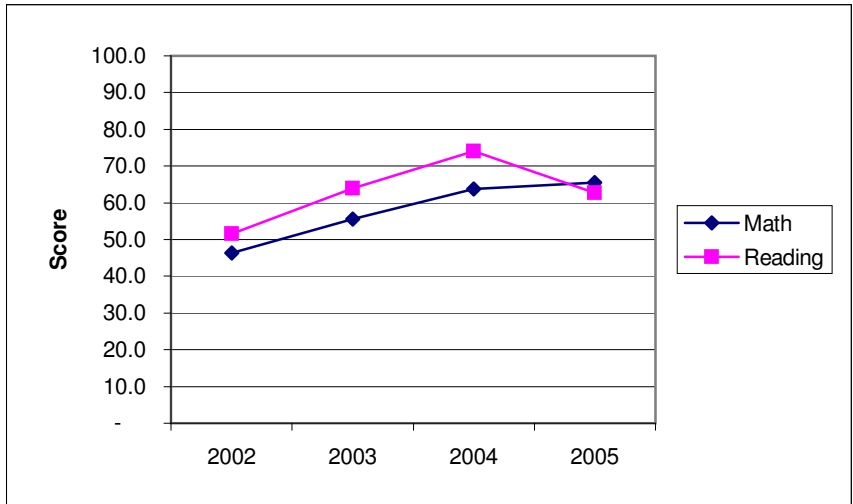
<b>Class of 2006</b>	1.1	12.0
----------------------	-----	------



## Grade 8

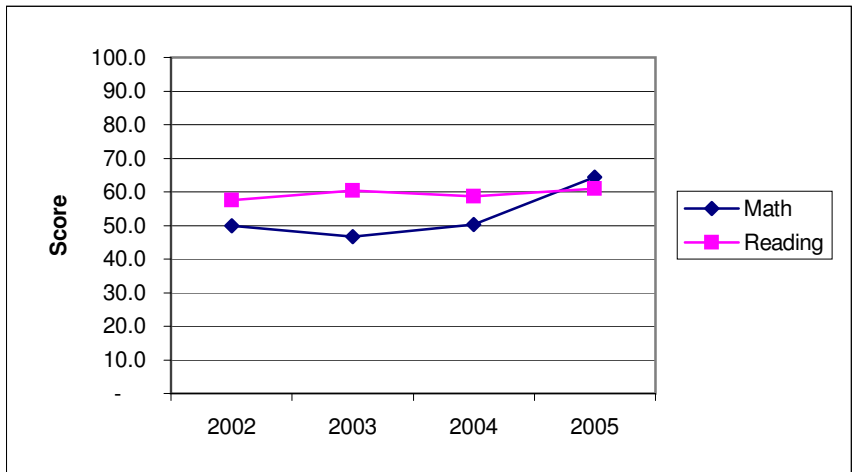
	Math	Reading
2002	46.3	51.6
2003	55.5	63.9
2004	63.8	74.1
2005	65.5	62.7

<b>Class of 2009</b>	15.50	5.20
----------------------	-------	------



## Grade 5

	Math	Reading
2002	50.0	57.5
2003	46.6	60.3
2004	50.2	58.7
2005	64.4	60.9

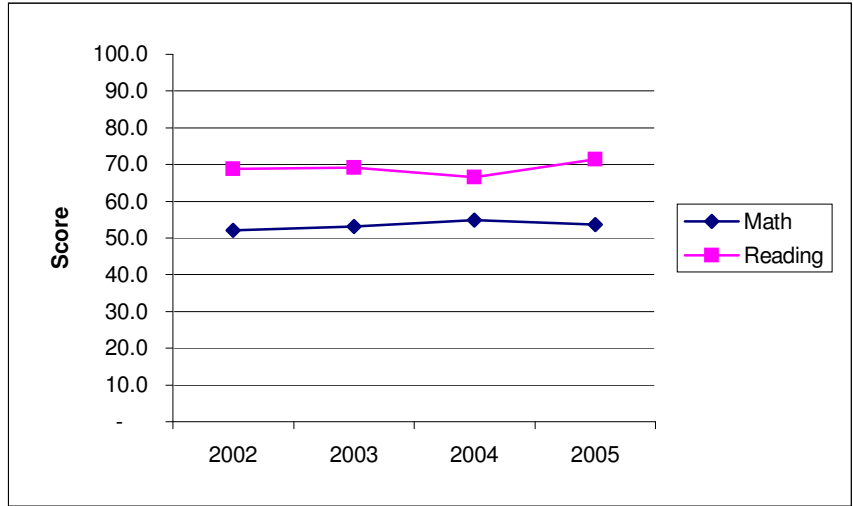


# Northern York PSSA Pass Rates

## Grade 11

	Math	Reading
2002	52.1	68.8
2003	53.1	69.2
2004	54.9	66.5
2005	53.6	71.4

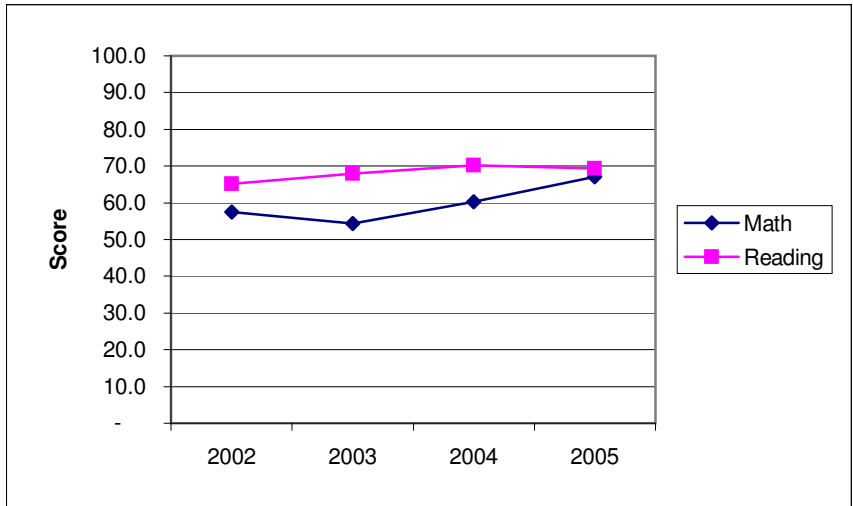
<b>Class of 2006</b>	(3.9)	6.2
----------------------	-------	-----



## Grade 8

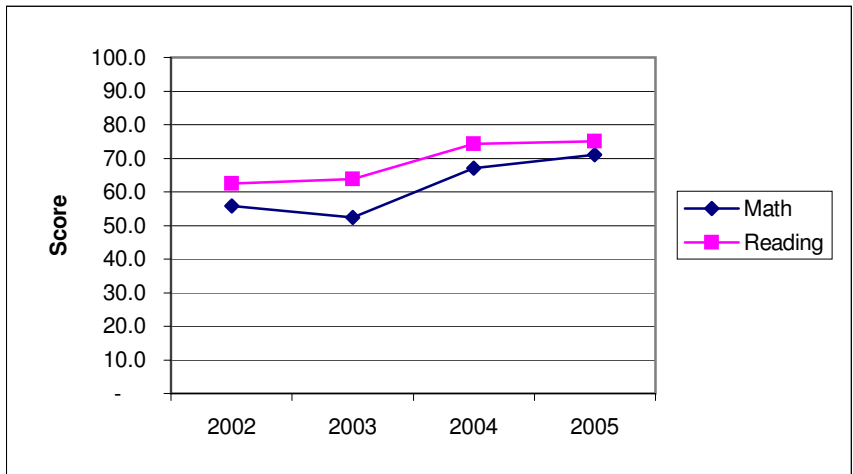
	Math	Reading
2002	57.5	65.2
2003	54.3	67.9
2004	60.3	70.2
2005	67.1	69.3

<b>Class of 2009</b>	11.20	6.90
----------------------	-------	------



## Grade 5

	Math	Reading
2002	55.9	62.4
2003	52.3	63.9
2004	67.1	74.2
2005	71.0	75.0

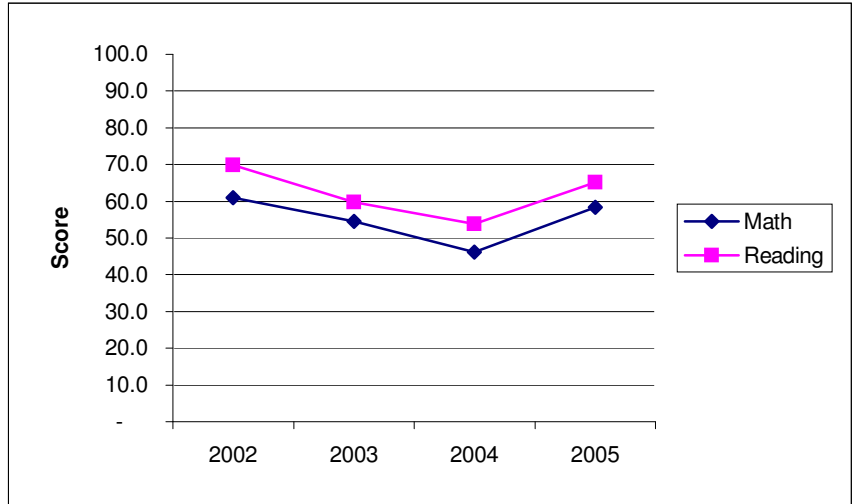


# Red Lion Area PSSA Pass Rates

## Grade 11

	Math	Reading
2002	60.9	69.9
2003	54.6	59.7
2004	46.2	53.8
2005	58.4	65.1

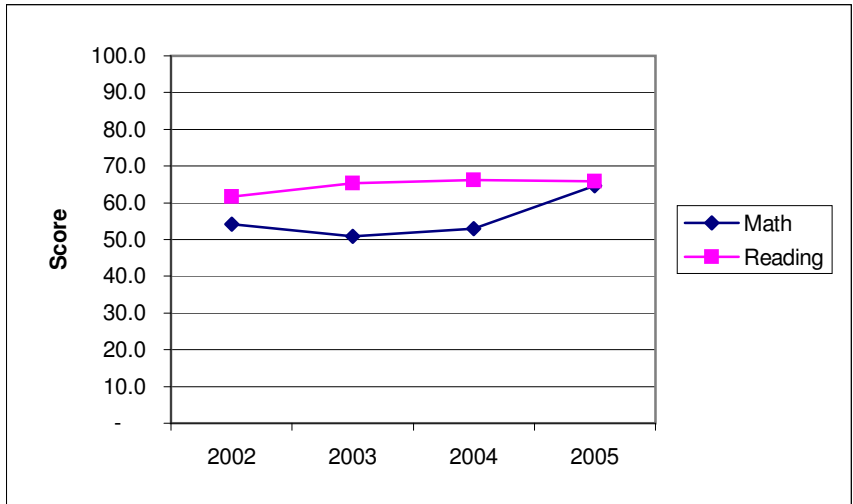
<b>Class of 2006</b>	4.2	3.5
----------------------	-----	-----



## Grade 8

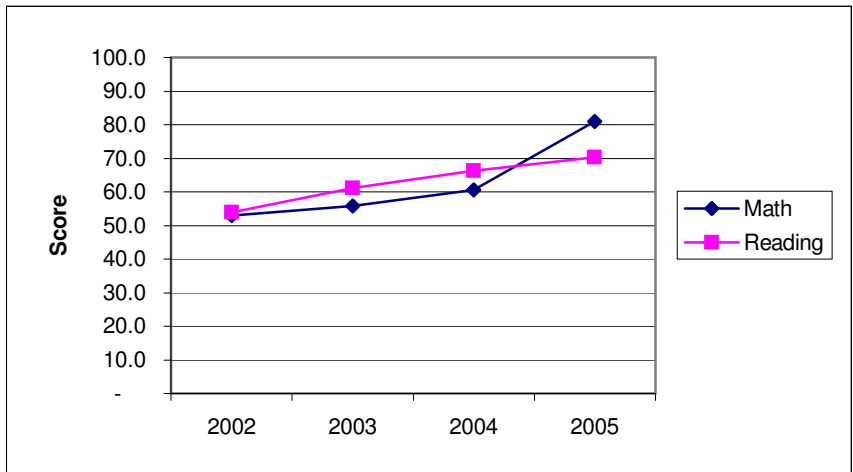
	Math	Reading
2002	54.2	61.6
2003	50.9	65.3
2004	53.0	66.2
2005	64.7	65.9

<b>Class of 2009</b>	11.80	11.90
----------------------	-------	-------



## Grade 5

	Math	Reading
2002	52.9	54.0
2003	55.9	61.1
2004	60.5	66.2
2005	81.0	70.3

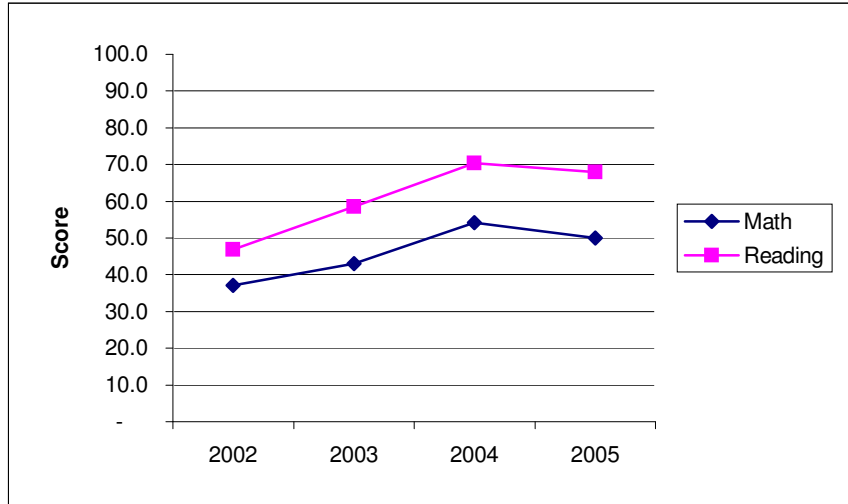


# South Eastern York PSSA Pass Rates

## Grade 11

	Math	Reading
2002	37.1	46.9
2003	43.0	58.6
2004	54.1	70.3
2005	50.0	68.0

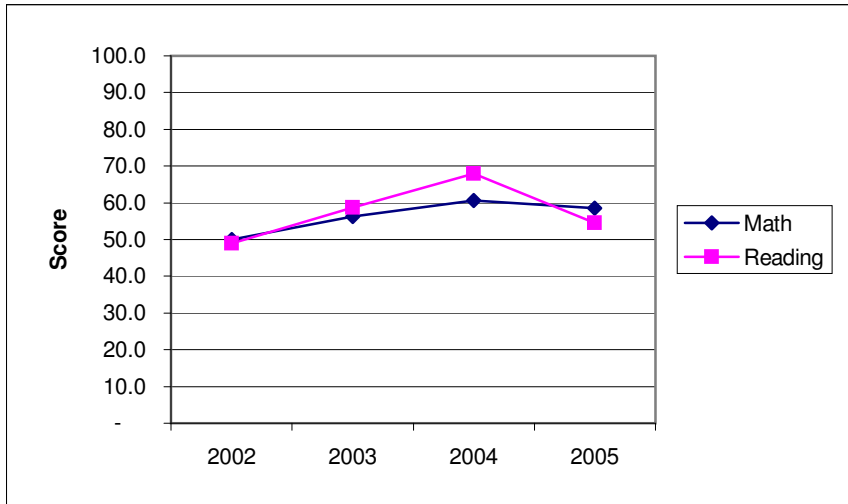
<b>Class of 2006</b>	-	19.0
----------------------	---	------



## Grade 8

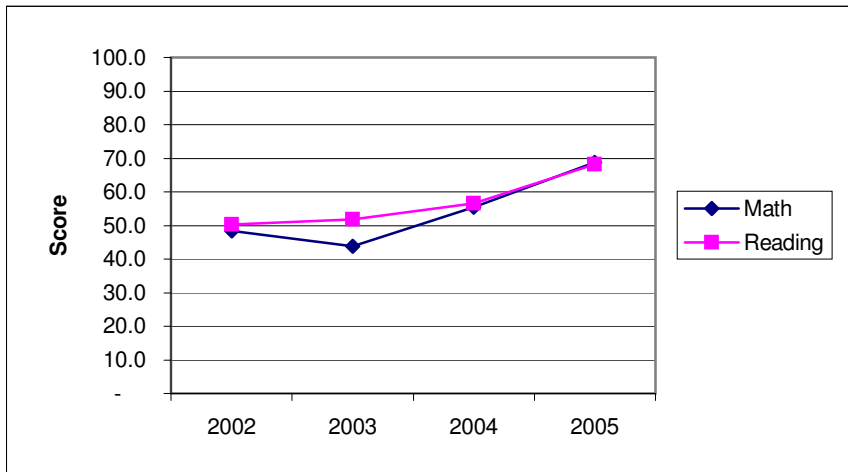
	Math	Reading
2002	50.0	49.0
2003	56.3	58.7
2004	60.6	68.0
2005	58.6	54.5

<b>Class of 2009</b>	10.30	4.30
----------------------	-------	------



## Grade 5

	Math	Reading
2002	48.3	50.2
2003	43.8	51.9
2004	55.4	56.6
2005	68.7	68.2

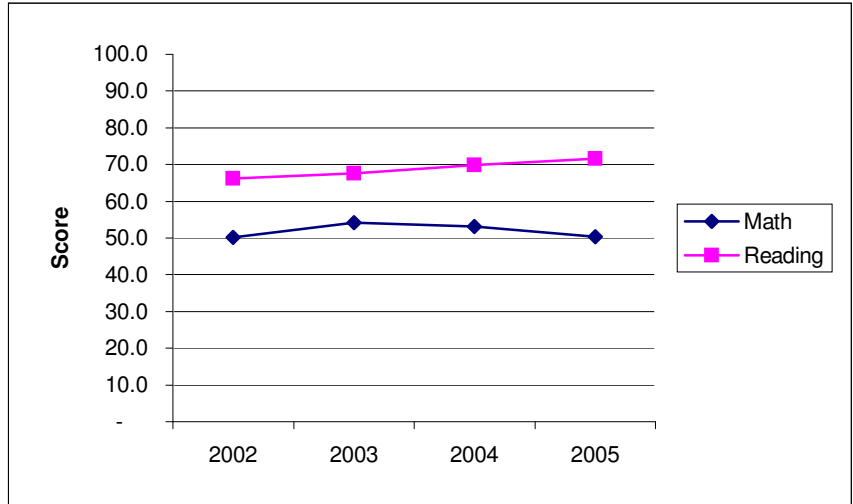


# South Western York PSSA Pass Rates

## Grade 11

	Math	Reading
2002	50.2	66.2
2003	54.2	67.6
2004	53.1	69.8
2005	50.3	71.6

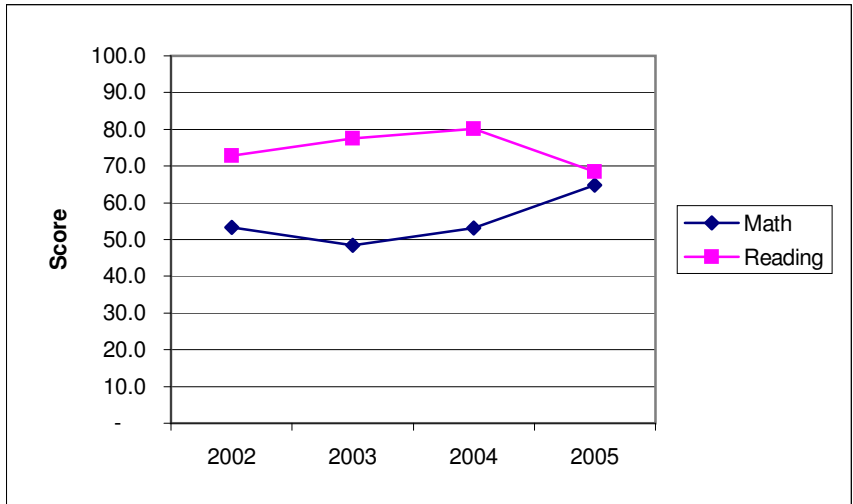
<b>Class of 2006</b>	(3.0)	(1.2)
----------------------	-------	-------



## Grade 8

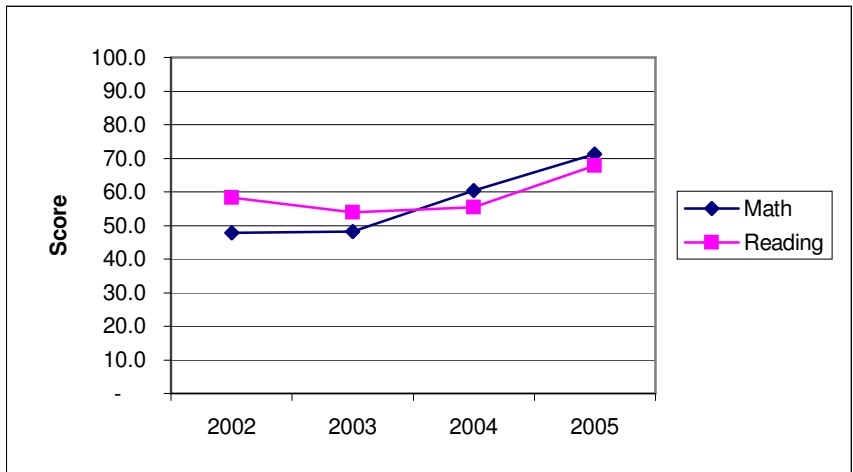
	Math	Reading
2002	53.3	72.8
2003	48.4	77.6
2004	53.2	80.1
2005	64.8	68.4

<b>Class of 2009</b>	16.90	10.20
----------------------	-------	-------



## Grade 5

	Math	Reading
2002	47.9	58.2
2003	48.2	54.0
2004	60.4	55.4
2005	71.3	67.9

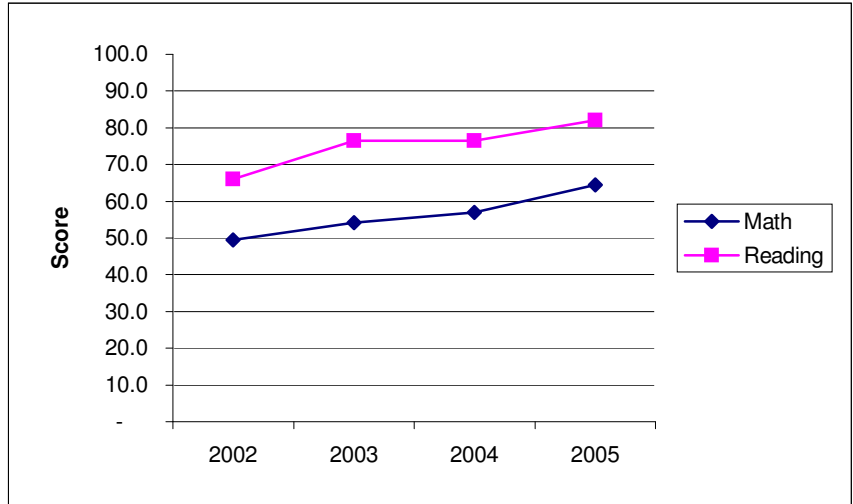


# Southern York PSSA Pass Rates

## Grade 11

	Math	Reading
2002	49.4	66.0
2003	54.1	76.5
2004	56.9	76.5
2005	64.4	82.1

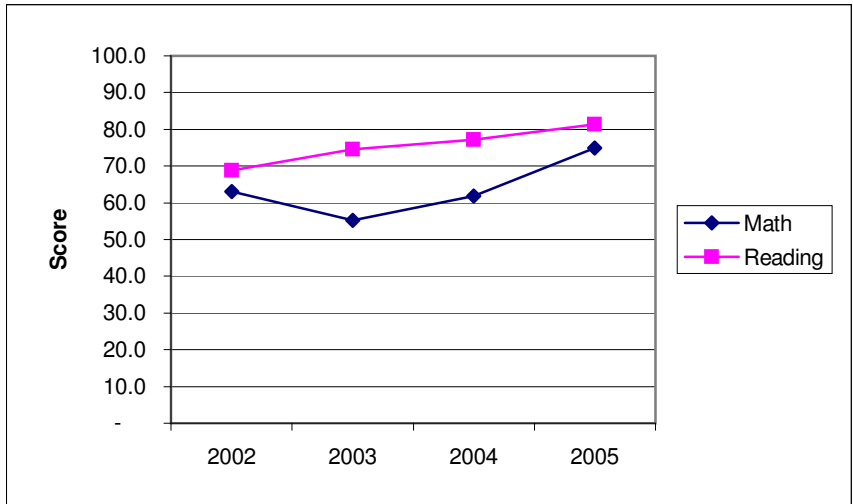
<b>Class of 2006</b>	1.3	13.2
----------------------	-----	------



## Grade 8

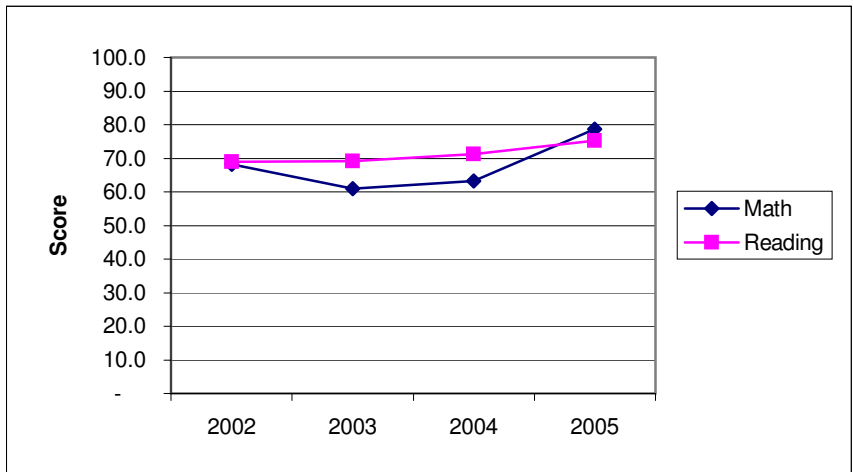
	Math	Reading
2002	63.1	68.9
2003	55.3	74.5
2004	61.8	77.1
2005	74.9	81.4

<b>Class of 2009</b>	6.80	12.50
----------------------	------	-------



## Grade 5

	Math	Reading
2002	68.1	68.9
2003	61.0	69.2
2004	63.3	71.2
2005	78.6	75.2

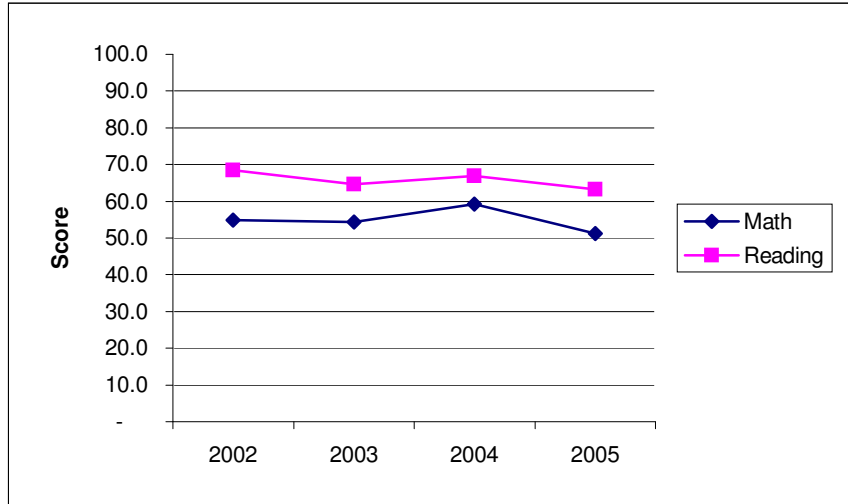


# Spring Grove Area PSSA Pass Rates

## Grade 11

	Math	Reading
2002	54.9	68.5
2003	54.4	64.7
2004	59.2	66.9
2005	51.3	63.2

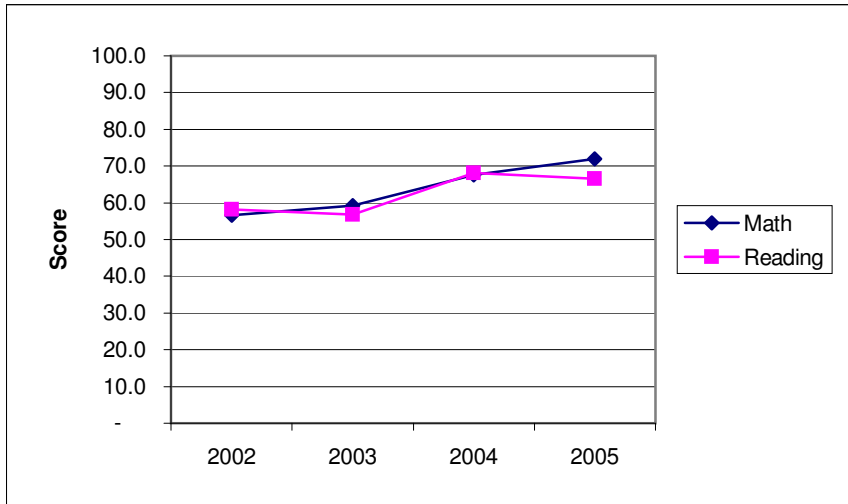
<b>Class of 2006</b>	(5.4)	5.0
----------------------	-------	-----



## Grade 8

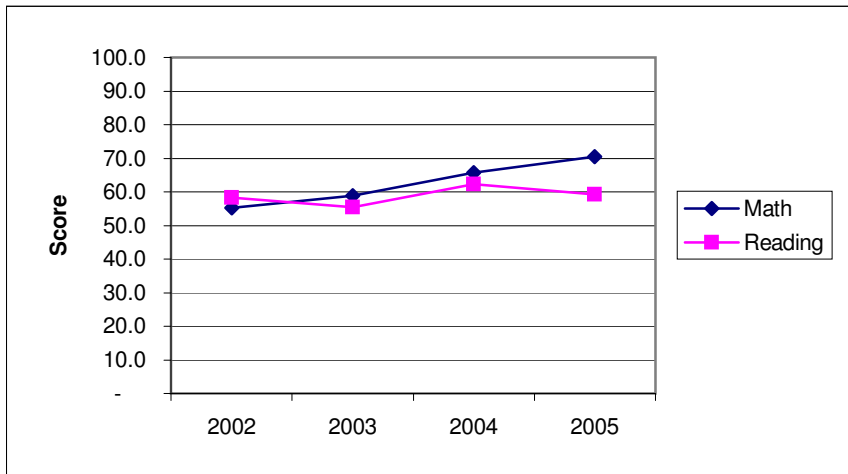
	Math	Reading
2002	56.7	58.2
2003	59.2	56.8
2004	67.6	68.1
2005	71.9	66.5

<b>Class of 2009</b>	16.60	8.20
----------------------	-------	------



## Grade 5

	Math	Reading
2002	55.3	58.3
2003	58.9	55.5
2004	65.7	62.3
2005	70.4	59.2

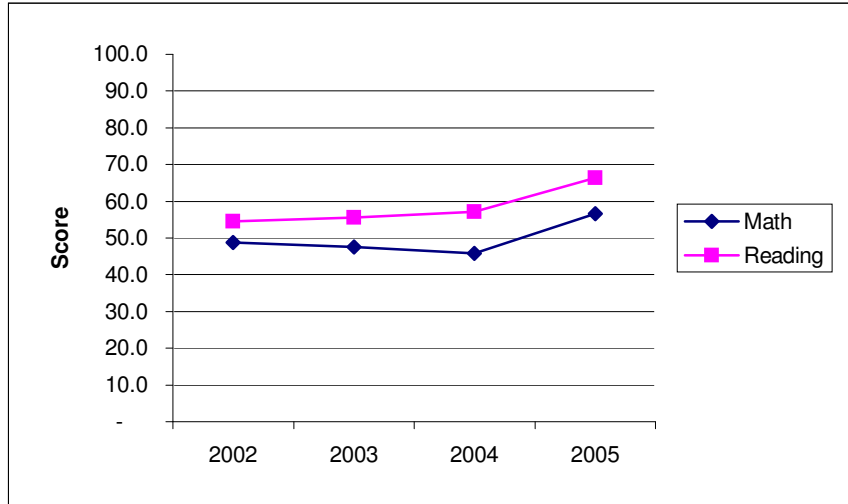


# West Shore PSSA Pass Rates

## Grade 11

	Math	Reading
2002	48.8	54.5
2003	47.6	55.5
2004	45.9	57.1
2005	56.7	66.3

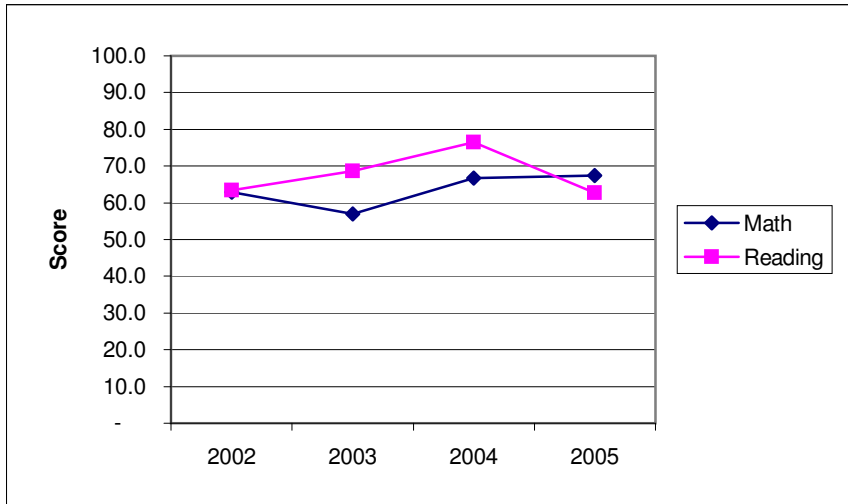
<b>Class of 2006</b>	(6.2)	2.9
----------------------	-------	-----



## Grade 8

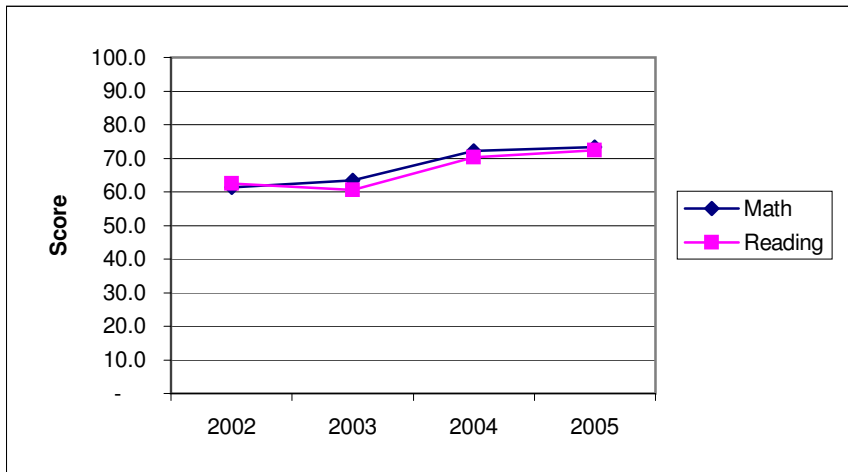
	Math	Reading
2002	62.9	63.4
2003	57.0	68.6
2004	66.7	76.5
2005	67.4	62.7

<b>Class of 2009</b>	6.10	0.30
----------------------	------	------



## Grade 5

	Math	Reading
2002	61.3	62.4
2003	63.5	60.6
2004	72.2	70.3
2005	73.3	72.3

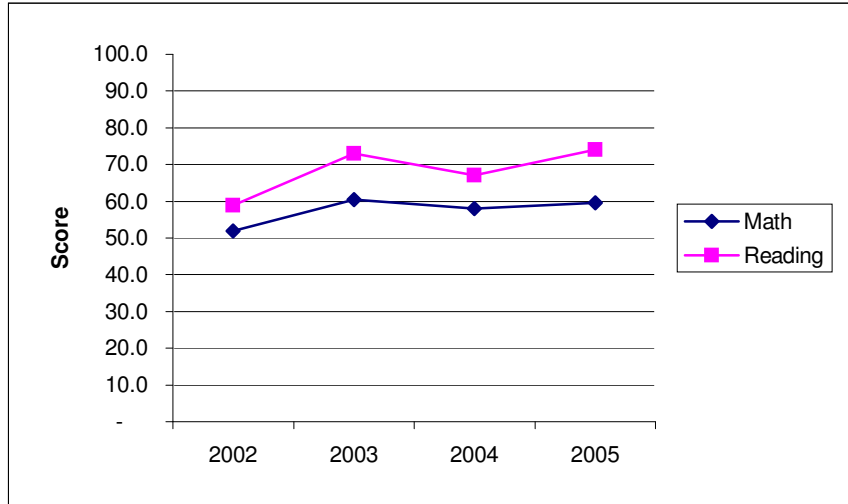


# West York Area PSSA Pass Rates

## Grade 11

	Math	Reading
2002	52.0	58.9
2003	60.5	73.0
2004	58.1	67.1
2005	59.5	74.0

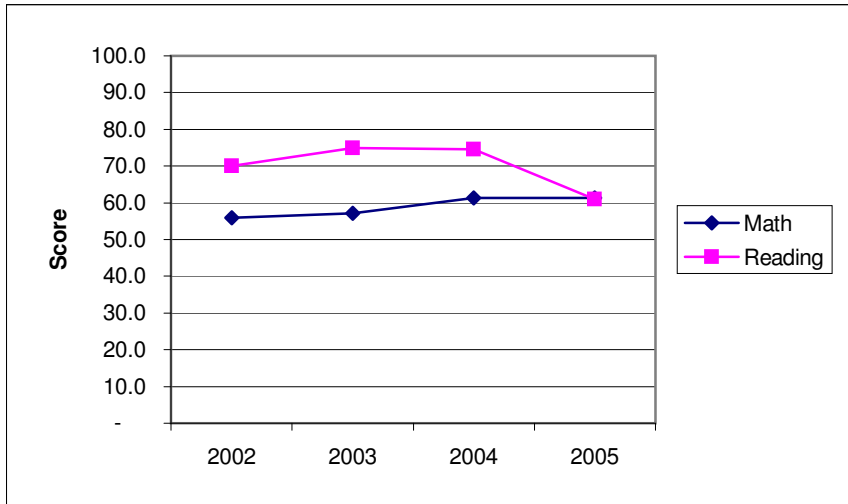
<b>Class of 2006</b>	3.6	4.0
----------------------	-----	-----



## Grade 8

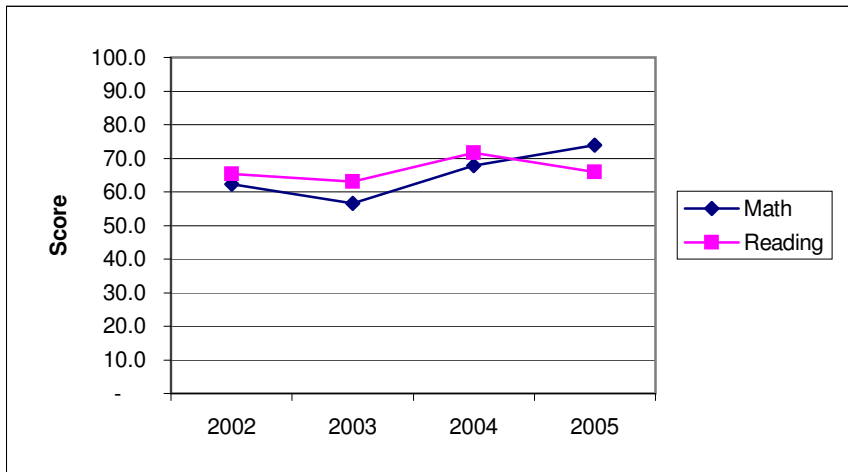
	Math	Reading
2002	55.9	70.0
2003	57.2	75.0
2004	61.4	74.5
2005	61.4	61.0

<b>Class of 2009</b>	(0.90)	(4.30)
----------------------	--------	--------



## Grade 5

	Math	Reading
2002	62.3	65.3
2003	56.6	63.1
2004	67.9	71.7
2005	73.9	65.9

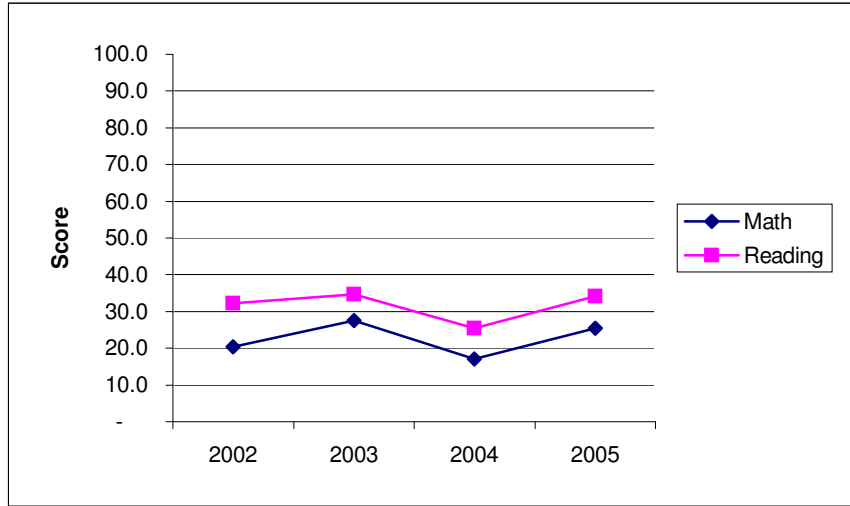


# York City PSSA Pass Rates

## Grade 11

	Math	Reading
2002	20.3	32.2
2003	27.5	34.6
2004	17.1	25.5
2005	25.4	34.1

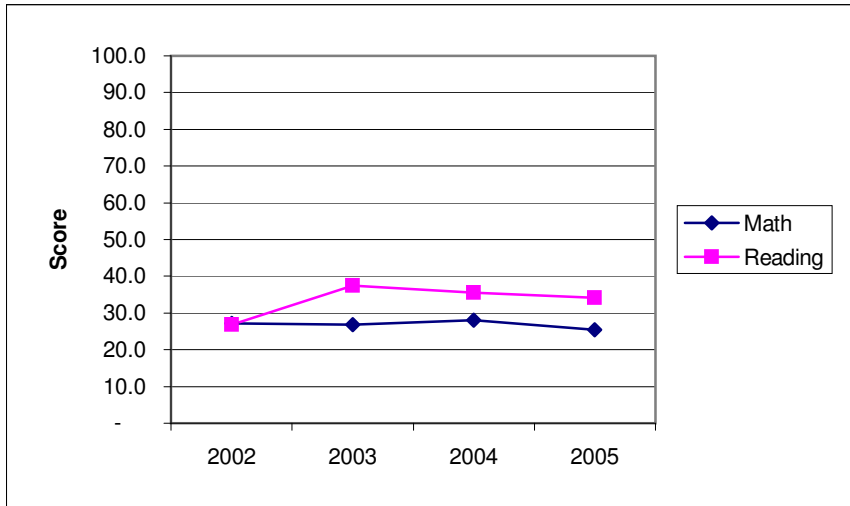
<b>Class of 2006</b>	(1.7)	7.2
----------------------	-------	-----



## Grade 8

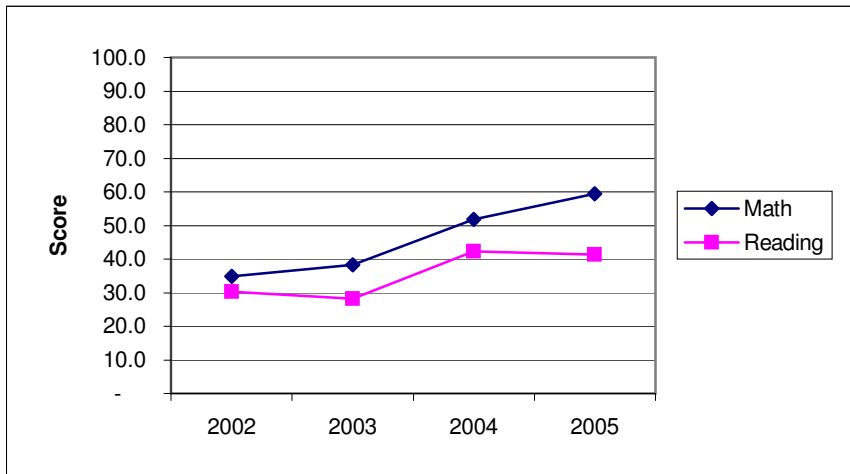
	Math	Reading
2002	27.1	26.9
2003	26.8	37.4
2004	28.0	35.6
2005	25.4	34.1

<b>Class of 2009</b>	(9.40)	3.80
----------------------	--------	------



## Grade 5

	Math	Reading
2002	34.8	30.3
2003	38.2	28.2
2004	51.9	42.3
2005	59.4	41.4

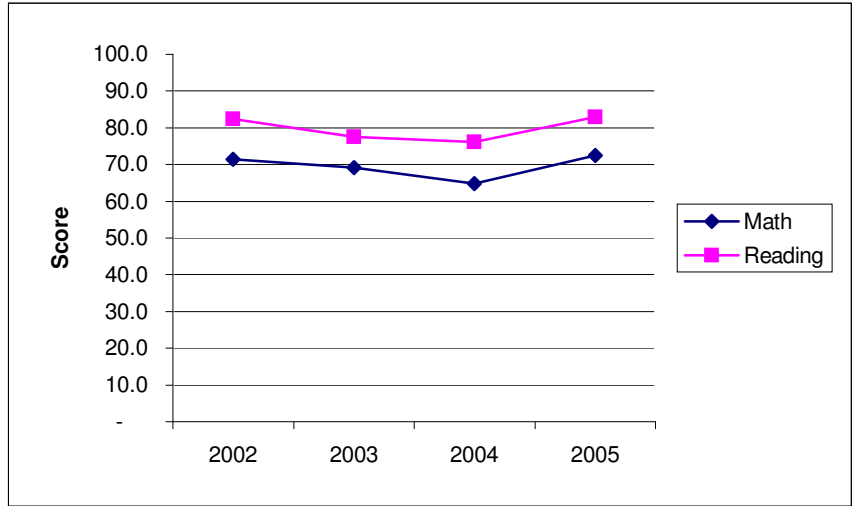


# York Suburban PSSA Pass Rates

## Grade 11

	Math	Reading
2002	71.5	82.4
2003	69.2	77.6
2004	64.8	76.2
2005	72.4	82.9

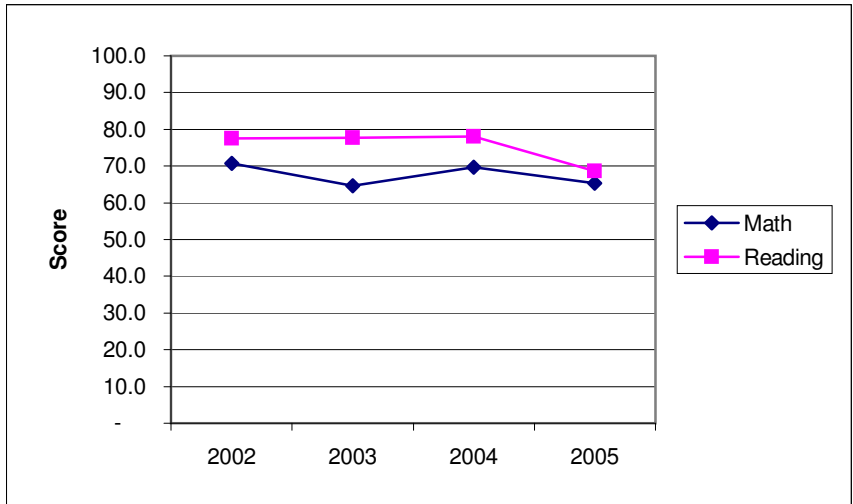
<b>Class of 2006</b>	1.7	5.4
----------------------	-----	-----



## Grade 8

	Math	Reading
2002	70.7	77.5
2003	64.6	77.7
2004	69.6	78.1
2005	65.4	68.6

<b>Class of 2009</b>	(5.70)	(2.90)
----------------------	--------	--------



## Grade 5

	Math	Reading
2002	71.1	71.5
2003	72.0	77.2
2004	76.8	77.7
2005	84.6	81.3

